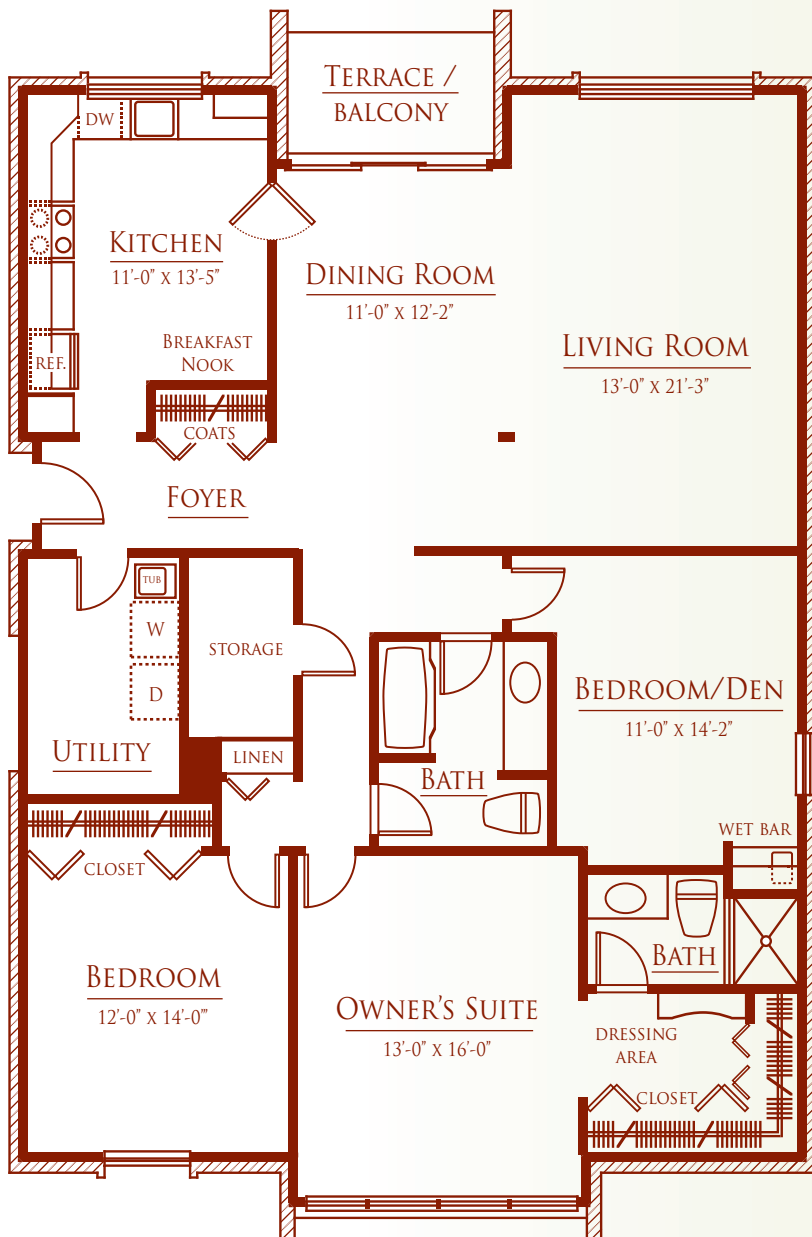


# THE PINNACLE



**THREE BEDROOM**

**TWO BATH**

**APPROXIMATELY 1,870 SQ. FT.**



This enormous, single-level plan opens with a formal foyer and guest closet. The sunny kitchen offers wrap-around counter space, a separate pantry and a large breakfast nook. The inviting dining and living rooms are ideal for entertaining or quiet family times. A sliding glass doorwall opens to a private, covered terrace/balcony. The owner's suite enjoys a private bath, huge dressing area and outstanding closet space, as well as sweeping windows for maximum natural light. A second large bedroom features plenty of closet space, and shares a dual-entry bath with a third bedroom or den. A walk-in storage room, and laundry/utility room with washer/dryer connections creates essential practicality. Individual gas furnace, central air conditioning and hot water heater add to the privacy and convenience.

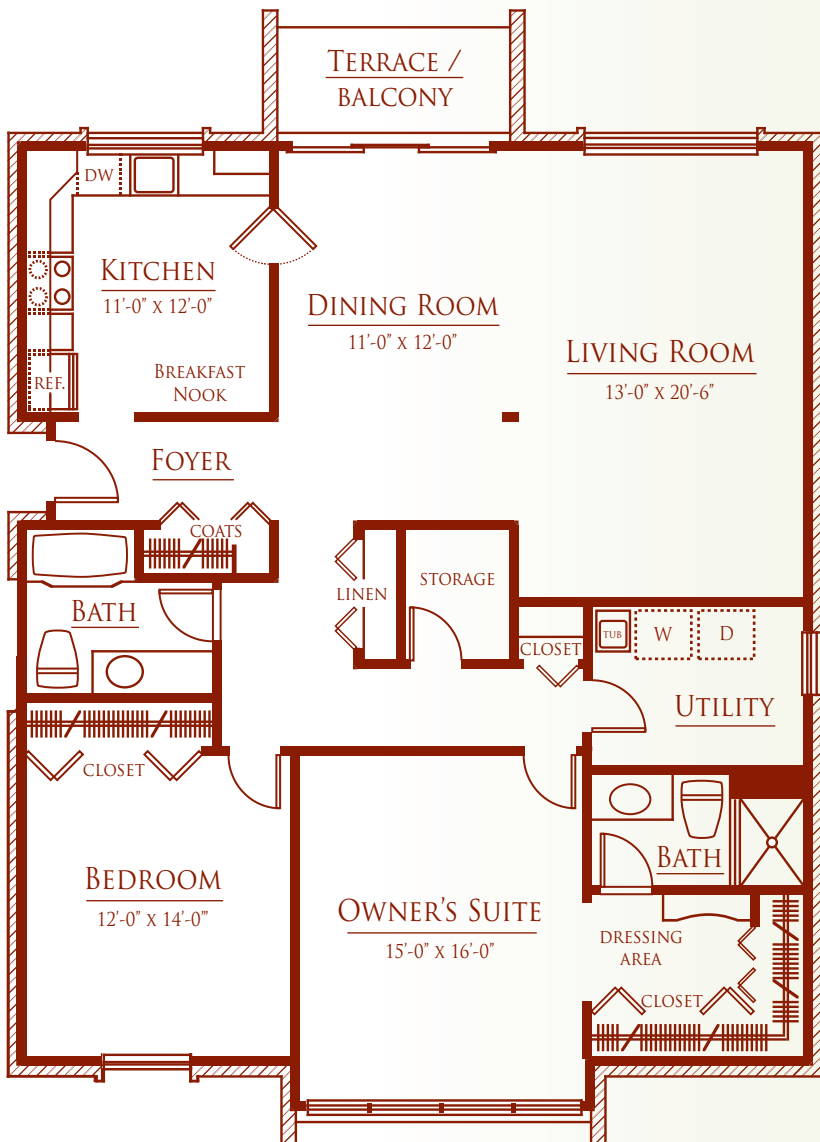


LEGACY PLACE

CONDOMINIUMS

# THE LEGEND

**TWO BEDROOM**  
**TWO BATH**  
**APPROXIMATELY 1,600 SQ. FT.**



From the inviting foyer with its large guest closet, step into the spacious, open living and dining rooms, featuring a huge window and a sliding glass doorwall to the covered terrace/balcony. The spacious eat-in kitchen, with abundant storage and preparation space, is a chef's delight. The elegant owner's suite with wall-to-wall windows features a private bath, large dressing area and excellent closet space. The second bedroom enjoys a roomy closet and access to a second full bath with a ceramic tiled tub. A walk-in storage room and huge laundry/utility room with washer/dryer connections add excellent value. Individual gas furnace, central air conditioning and hot water heater add to the privacy and convenience.

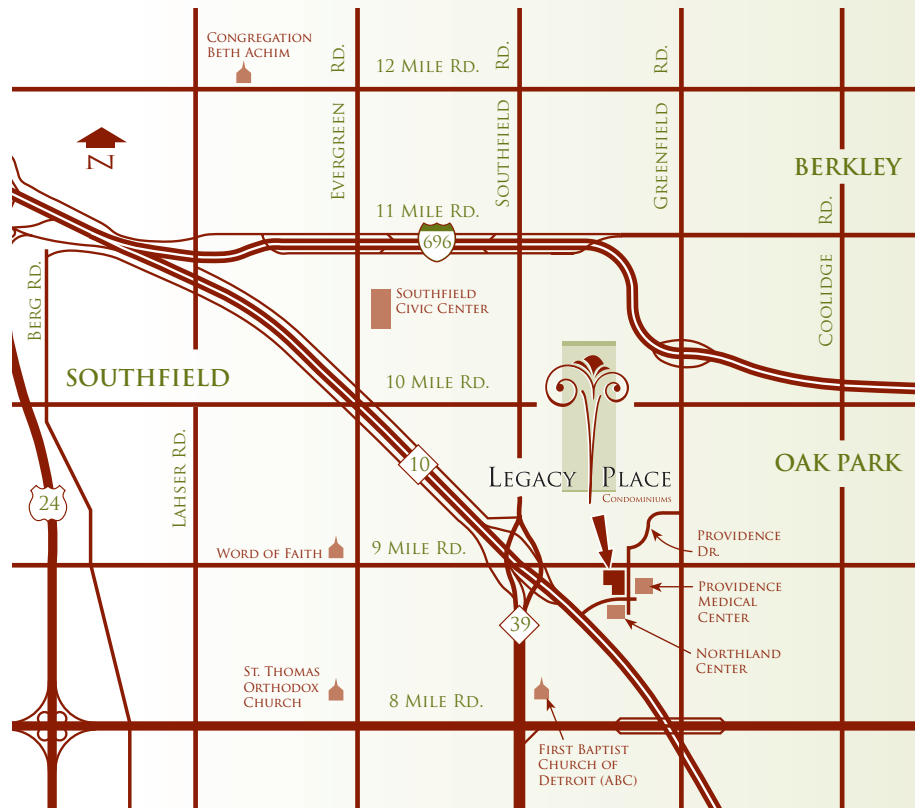
# SITE MAP



LEGACY PLACE

CONDOMINIUMS

# AREA MAP



Located in Southfield at 9 Mile Road and Providence Drive, Legacy Place offers close proximity to major thoroughfares including the Southfield, Lodge and I-696 freeways. Downtown Detroit's leading employment, entertainment and professional sports venues are within easy reach. Places of worship, the Tel Twelve Mall, Northland Center, Southfield Civic Center and Providence Medical Center, are all close at hand. Residents also enjoy great golf at the nearby Plum Hollow Golf Course and Evergreen Hills Golf Club. Indeed, at Legacy Place, you'll come home to an unbeatable lifestyle in the ideal location.



LEGACY PLACE

CONDOMINIUMS



# FEATURES & AMENITIES

- Elegant single-level condominium homes set amidst tranquil, landscaped courtyards
- Reserved garage parking space plus ample guest parking
- Sparkling swimming pool and clubhouse with workout room
- Private balconies and terraces overlooking mature landscaping
- Spacious floor plans with open, inviting living spaces
- All kitchen appliances included
- Ample closet and storage space
- In-residence laundry room with washer/dryer connections
- Individually-controlled central air and gas heat
- Upgrades available
- Close to the area's finest shopping, recreation, business, and educational opportunities
- Easy access to major highways, including the Southfield, Lodge and I-696 expressways

---

Legacy Place's unmistakable substance and warmth provide the perfect ambiance for exceptional, carefree condominium living. Set amid mature landscaping and inviting community areas, Legacy Place offers the perfect blend of privacy and neighborhood interaction. Relax with friends around the pool or in the well-appointed community center. Spacious two bedroom condominium homes feature easy living floor plans, large windows to capture ample sunlight, peaceful terraces or balconies and a range of conveniences.

